



GLOBALHOLIDAYS
GROUP TOURS | MICE | EVENT

Discover Japan & South Korea, Discover Yourself

JAPAN & SOUTH KOREA

12 Days – 11 Nights

Departure Dates				\$4799* PLUS AIRFARE PER PERSON
22 MAR	03 APR	16 APR	10 MAY	

Countries Covered :

TOKYO, NAGOYA, KYOTO, NARA, HIROSHIMA, OSAKA, SEOUL



Tour Highlights :

Tokyo

- *Shibuya Crossing*
- *Imperial Palace, Asakusa Sensoji Temple,*
- *Tokyo Sky Tree with Entrance*
- *Visit Team Labs Planet*
- *Mt. Fuji 5th Station (Weather Permitting),*
- *Hakone Cable Car*
- *Lake Ashi Cruise*

Nagoya

- *Bullet Train -Tokyo - Nagoya*
- *Visit Toyota Commemorative Museum*
- *SC Meglev and Railway Park*
- *Photostop at Mirai Tower, Oasis 21 and @NAGOYA sign*

Osaka

- *Nara Deer Park & Todaiji Temple*
- *Kimono wearing experience at Nara*
- *Osaka Castle (Outside)*
- *Umeda Sky Building*
- *Free time for shopping*

Hiroshima

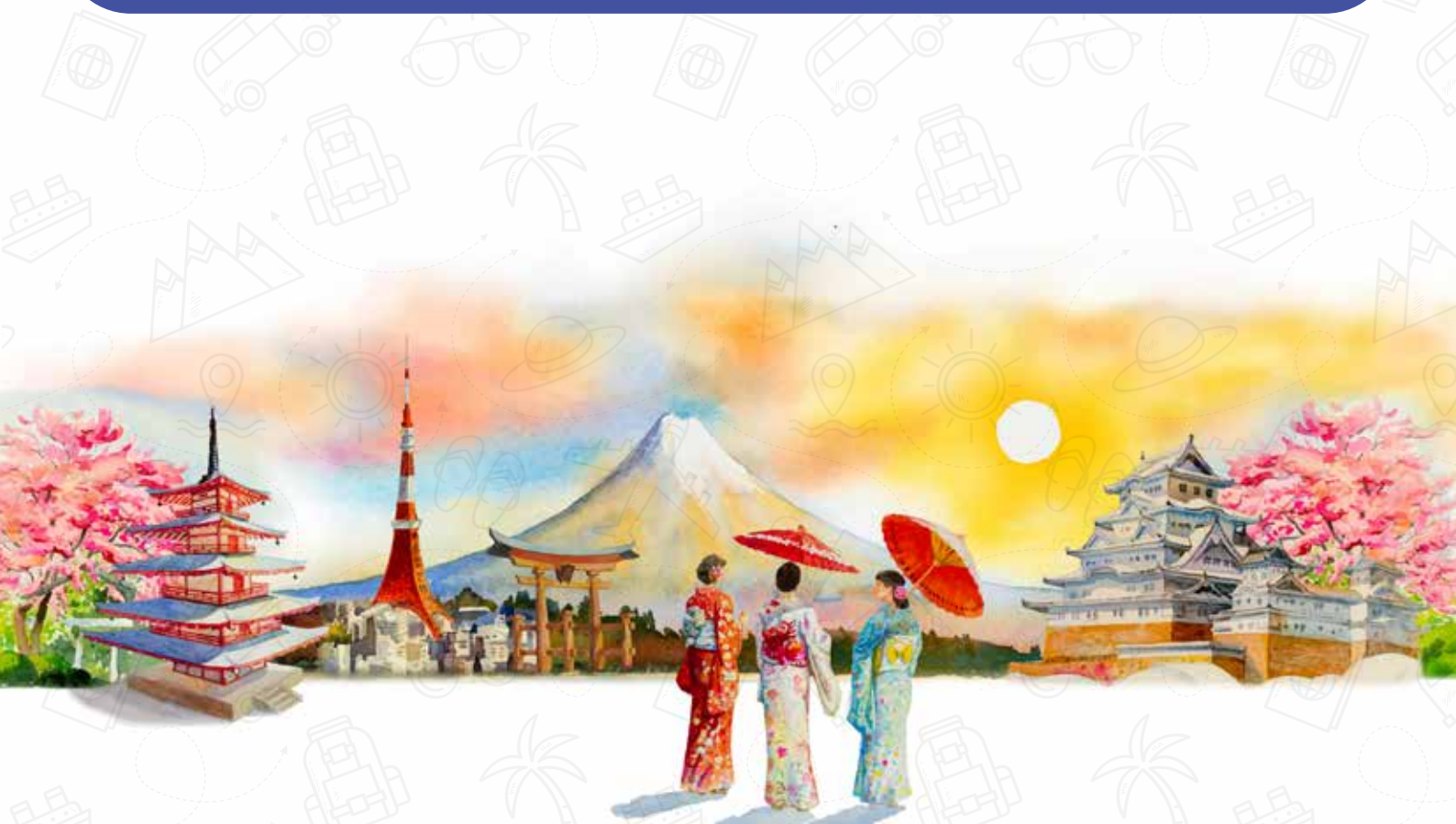
- *Day trip to Hiroshima by Bullet Train from Osaka – Hiroshima (2nd Class)*
- *Hiroshima Peace Memorial*
- *Miyajima Island*

Kyoto

- *Kiyomizudera Temple,*
- *Ninenzaka&Sanenzaka Street,*
- *Arashiyama Bamboo Forest*
- *Fushimi Inari Shrine*

Seoul

- *Han River Cruise*
- *Visit DMZ (Demilitarized Zone)*
- *Gyeongbokung Palace*
- *Jogyesa Temple*
- *Visit Nami Island*
- *N Seoul Tower with Entrance*





Departure Dates & Price

22 Mar, 2027	03 Apr, 2027	16 Apr, 2027	10 May, 2027
Adult Child (2-11)	Adult Child (2-11)	Adult Child (2-11)	Adult Child (2-11)
\$4799 \$3899	\$4799 \$3899	\$4799 \$3899	\$4799 \$3899

- Adult: Price per person based on 02/03 adults sharing a room
- Child: Between 2 – 11yrs sharing room with Two Adults (No Bed)
- Max occupancy per room is 03 person (Excluding Infants)
- **Single supplement will be an additional \$ 1680**
- *Price based on Minimum 25 passengers travelling together.



Price Includes

- 11 Night's accommodation in Executive Hotels with Breakfast.
- Ground Transportation by AC Deluxe Coach
- 5 Packed / Local Lunches & 4 Indian Veg Lunches
- 08 Indian Dinners Prepared by Maharaj (Chef).
- 03 Indian Dinners in South Korea at Restaurant (**No Chef in South Korea**)
- Entrances and sightseeing as mentioned under tour highlights
- 01 Mineral water bottle (500 ML) per person per day
- Excellent Service of a Global Holidays Tour Manager

Early Bird Offer :

Book 10 Weeks in Advance
\$335 off per adult
\$270 off per child

Book 08 Weeks in Advance
\$240 off per adult
\$195 off per child



Exclusions:

- International Airfare as applicable
- Cost of Visa if applicable
- **Mandatory Tips – USD 100 per person**
- Travel Insurance
- Anything not specifically mentioned in Inclusions above

*Your Gateway
to
Japan & Korea's
Grandest
Adventures.*



DAY 1

Arrive Tokyo



**TOKYO CITY
SCAPE**



**SHIBUYA
CROSSING**

Welcome to Tokyo. Once you clear your immigration and custom, meet & greet your Global Holidays Tour Manager and proceed to hotel. (Check in After 3 PM) **(Only One arrival Transfer is Included. If pax arriving at Different times or Different Airport, they have to manage their own transfer to the Hotel)**

In the Evening visit to Shibuya Crossing which is a famous intersection where up to 3000 people cross over at one time from all directions.

Dinner

DAY 2

Tokyo City tour – Team Labs

Tokyo City tour - Visit the Imperial Palace (Primary residence of the Emperor of Japan). Next visit the tallest structure in Japan to enjoy views of sprawling Tokyo city from the towering observation deck of TOKYO SKYTREE. Later visit the Asakusa Sensoji Temple which is an ancient Buddhist temple and have some free time at Nakamise Shopping Arcade where you can walk around the local stores or try famous street food of Japan. Post Lunch it's time to discover the incredible Team Lab Planets – an art facility that utilizes digital technology to create illusions. Here you walk through water, and a garden where you become one with the flowers. It comprises 4 large-scale artworkspaces and 2 gardens. Overnight in Tokyo.



ASAKUSA TEMPLE



TEAM LABS

Breakfast Lunch Dinner

DAY 3

Tokyo – Mt. Fuji & Hakone – Tokyo



MT. FUJI



**HAKONE
CABLE CAR**

Today enjoy a dynamic tour of Mt. Fuji and Hakone. Mt. Fuji is an active volcano about 100 kilometers southwest of Tokyo. Commonly called "Fuji-san," it's the country's tallest peak, at 3,776 meters. Drive to the highest point in the mountain that a bus can drive in to the 5th Station (Weather Permitting). Later enjoy the sweeping views from Hakone Sky Gondola and Pirate Boat on Lake Ashi will surely remain memorable. In the evening return to Tokyo for the overnight stay.

Breakfast Packed Lunch Dinner

DAY 4

Tokyo –Nagoya –Toyota Commemorative Museum SC Meglev and Railway Park

After breakfast, check out from the hotel and travel by Bullet Train to Nagoya, Japan's fourth-largest city. Visit the Toyota Commemorative Museum of Industry and Technology to explore Toyota's automotive history and innovations. Later, enjoy the SC Maglev and Railway Park, showcasing historic trains, Shinkansen bullet trains, and advanced Maglev technology. Capture memorable photos at Mirai Tower, Oasis 21, and the iconic @NAGOYA sign. After dinner, check in to the hotel in Nagoya.



BULLET TRAIN



NAGOYA SIGN

Breakfast Lunch Dinner

DAY 5

Nagoya - Nara Deer Park –Todaiji Temple - Kyoto



TODAIJI TEMPLE



NARA DEER PARK

Today we checkout from the hotel and depart for Nara and visit Nara Deer Park and Todaiji Temple. You can have an experience to dress in an authentic Kimono and learn the history and traditions behind this iconic clothing. Later we will check in to the hotel in Kyoto for overnight stay.

Breakfast Lunch Dinner

DAY 6

Kiyomizudera Temple - Kinkaku-ji –Arashiyama - Osaka

Once the capital of Japan, Kyoto is famous for its numerous classical Buddhist temples, gardens, imperial palaces, shrines and traditional wooden houses. Visit Kiyomizu Temple which is an independent Buddhist temple in eastern Kyoto. Later cover the Ninenzaka and Sannenzaka a charming pedestrian path known for its classic architecture, teahouses & cherry blossoms. Post Lunch visit the bamboo forest, and Groves in Arashiyama Area. Also visit the Fushimi Inari Shrine which has thousands of Torii gates and is an important Shinto shrine in Japan. Overnight at Osaka.



**ARASHIYAMA
BAMBOO FOREST**



**FUSHIMI
INARI SHRINE**

Breakfast Local Lunch Dinner

DAY 7

Osaka – Day trip to Hiroshima (Bullet Train) - Osaka



**MIYAJIMA
TORI GATE**



**HIROSHIMA ATOMIC
BOMB DOME**

Today experience the Shinkansen - (Famously known as Bullet Train) from Osaka to Hiroshima, running at speed of up to 300 km/h and known for its punctuality. Hiroshima is a modern city on Japan's Honshu Island which was largely destroyed by an atomic bomb during World War II. On arrival we will proceed to Miyajima Island via Ferry and we will visit the Itsukushima Shrine, best known for its "floating" torii gate. Also visit the Peace Memorial. In the evening return to Osaka for Overnight stay.

Breakfast Packed Lunch Dinner

DAY 8

Osaka Castle (Outside) - Umeda Sky

Today, proceed for a guided city tour. Start your visit to Osaka Castle, one of Japan's most famous landmarks and it played a major role in the unification of Japan during the sixteenth century. Next visit the Floating Garden Observatory at Umeda Sky Building, where Osaka's cityscape can be viewed from a height of 170 meters. Rest of the day have free time for shopping at Dotonbori and Shinsaibashi. Overnight in Osaka.



OSAKA CASTLE



**DOTONBORI &
SHINSAIBASHI**

Breakfast Lunch Dinner

DAY 9

Osaka – Seoul



SEOUL



**HAN RIVER
CRUISE**

After breakfast checkout from the hotel and transfer to the airport for your flight to Seoul. Arrive Seoul and transfer to Hotel. Evening Proceed for Han River Cruise. Dinner and Back to Hotel

Breakfast Dinner

DAY 10

DMZ + City Tour

After Breakfast proceed to Gyeongbokgung Palace to see the Changing of Guards Ceremony. Later drive to DMZ and enjoy Cable Car + Freedom Bridge, Unity Bell etc. Post Lunch return back to Seoul to visit Jogyesha Temple and Insadong Street. Dinner and Back to Hotel



DMZ



GYEONGBOKGUNG PALACE

Breakfast Local Lunch Dinner

DAY 11

N Seoul Tower – Nami Island – Free time at Lotte Tower



NAMI ISLAND



N Seoul Tower

Breakfast. Visit N Seoul Tower. Post Lunch continue to visit Nami Island and later free time for Shopping at Lotte Tower. Dinner and Back to Hotel.

Breakfast Local Lunch Dinner

DAY 12

Departure

Breakfast. Departure to Seoul Airport.



FLY BACK HOME



DEPARTURE

Breakfast



Booking & Payment Procedure

- Please email us the dully filled & signed booking form along with copy of passport.
- Non – Refundable Booking deposit of 40% (Land/Cruise) will be required to confirm the booking.
- Balance must be paid 06 weeks prior to departure.
- 100% payment will be required for any booking made within 06 weeks of departure date.

Payment Options

1. Mail a check Payable to Axar Tour Global Holidays (333 Summit Village Drive, Marietta GA 30066).
2. Bank Transfer to below account
3. Credit Card: 4% Surcharge will apply

Bank: Bank of America
Branch: Marietta, GA
Account Name: Axar Tour Global Holidays LLC
Account Number: 334082590217
Routing numbers: 061000052 (Paper & Electronic) 026009593 (Wire)
Swift Code: BOFAUS6S

Important Note:

1. The rates are subject to change as per availability
2. Company reserves the right to change the hotel, schedule due to unavoidable circumstances without any prior notice.
3. Rates are based on Twin Sharing basis.
4. Rooms - Two to share a room. Single supplement applies where Applicable, children below 11 years will share parent's room without extra bed.
5. All the prices mentioned are in USD.
6. Given quote is based on the mentioned duration of the tour and mentioned inclusion. Any change in the duration of tour or inclusion will change the tour costing.
7. All the given quotes are based on Run of the House room type and so rooms offered will have one King or Two Queen or Twin Beds. We do not guarantee the room type or bed type.
8. City Fire Code limits the number of beds in a room to a maximum of two beds irrespective of Single, Twin, Triple or Quad occupancy.
9. It is assumed that all clients will arrive by the same flight at the same airport and in the same terminal. Should the flights be spread out or arrive in different Terminals, additional costs may apply.
10. This quote is based on the current federal, provincial and city taxes, surcharges, and fees as applicable at the time of quotation. Any subsequent change in the tax tables would be applicable to this quote. The quote also is adjusted for applicable Tax and GST & HST rebate

Contract:

All bookings are taken understanding that you have read and accepted these terms and conditions. Global Holidays organizes services like hotel accommodation, transfers, sightseeing tours and cruise bookings. We are being travel organizers only, we do not control or Operate any Airline, neither do we own or control or operate any shipping company, coach company, hotel, transport, or any other service mentioned in this brochure. Though we take care in selecting all the necessary agencies for your vacation, we have no control in running them. Hence, we cannot be held responsible for any injury, death, loss or damage, or deficiency in services which is caused by the act or default of management or employees of an independent contractor arising outside our normal selection and inspection process.

Liability:

Global Holidays is not liable or responsible for any damages, loss, injury accident, death, delay, breakdown, or irregularity that may occur in carrying out the tour arrangement. (In event of a passenger falling ill or suffering any accident during the journey, all hospital expenses, doctor fees, repatriation expenses and other charges incurred as a direct or indirect result of his / her illness / accident are the responsibility of the passenger. (Management reserves the right to claim any additional expenses due to delay or changes in train, airplane, bus ship or other services, weather conditions, strikes, war, quarantine, or any other cause whatsoever all such loss or expenses must be borne by the passenger.

VISA'S

It is the passenger's responsibility to ensure that they possess respective visa's/ETA before the tour. Global Holidays will not be held responsible and shall accept no liability if

- (a) Passengers are unable to travel due to inappropriate documents/no visa's/ETA/Expired Passport
- (b) If passengers are stopped or held by any government department, e.g., Police, Customs, Immigrations, or any other authorities of the destination country

Travel Insurance

We highly recommend all our passengers to get travel insurance (<https://globalholidays.us/travel-insurance/>).

Travel insurance helps protect against the unexpected.

A primary incentive to get travel insurance can be for the emergency medical assistance.